

ARBORLAND

ANN ARBOR, MI



Opened in the 1960s as an indoor mall, Arborland was completely redeveloped as a 390,000-sf "destination center," with over 20 accessible stores and 1,800 parking spaces on a 37-acre site. Midwestern Consulting provided surveying, site planning, traffic evaluations, a new stormwater management system, landscape planning, and construction plans.

Over 12,000 feet of new utility infrastructure improvements were installed. The facility succeeded in combining a range of small and large stores with convenient parking, easy access, and an effective water management system. All work was accomplished while maintaining services, access, and operation of stores that remained open during the construction.



M I D W E S T E R N C O N S U L T I N G

STATION PLACE

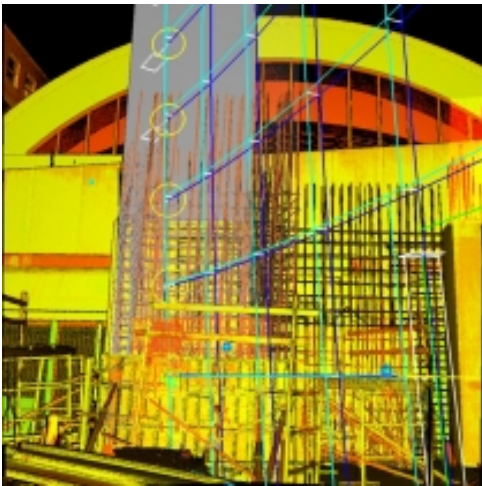
WASHINGTON, D.C.



Station Place — the new Securities and Exchange Commission headquarters in Washington, D.C. — is a 1.5-million-square-foot building with an impressive double curved glass walled and skylighted lobby designed by Advanced Structures Incorporated in Los Angeles, and fabricated and erected by Art Iron of Toledo.

Midwestern Consulting surveyed components of the complex cabling system that supports the glass. The 90-foot tall by 60-foot wide entrance wall and 60-foot square skylight are made up of 360 5-foot square glass panels supported by double curved nets of cables. This double-curve combination design of lobby and skylight has never been built before anywhere in the world.

Midwestern Consulting surveyed components of the complex cabling system that supports the glass. The 90-



The firm used high definition (3D laser scanning) surveying technology to:

- Measure the exact location of the embeds that anchor the cables to the entrance walls and super columns
- Measure nodes of cable intersections to verify cable connection points with the theoretical locations for glass panel brackets
- The highly accurate technology was necessary because of the extremely close tolerances for glass installation

This is a very complicated project. Midwestern Consulting has been so much help, it is unbelievable. There aren't many companies out there that can do this work and thank God we chose them.

Dale Hanson
Art Iron Inc.



M I D W E S T E R N C O N S U L T I N G

PLYMOUTH GREEN CROSSING

ANN ARBOR, MI



Plymouth Green Crossings is a 9-acre mixed use development in northeast Ann Arbor—one of the first such developments located outside the downtown area. The completed first phase includes wetland and stormwater management systems and three buildings. The project was complex because it includes a Land Division to divide the site from the adjacent Ave Maria School of Law, site rezoning to

Planned Unit Development, Site Plan approval as a Site Condominium with a retail/residential Condominium within the Site Condominium, and a Site Plan Administrative Amendment for the remaining Ave Maria site. Midwestern Consulting was brought into the project to help resolve conflicting city, county, and state natural features issues involving flood control, water quality, storm water detention, and habitat preservation within a Millers Creek tributary.

We designed a plan that met the conflicting goals by expanding the wetland area by 50%, increasing storage volume in the creek, providing 100-year detention outside of the tributary in an underground system and surface basin, reducing impervious surfaces, removing invasive species, and restoring the existing wetland.

Ann Arbor Business Review Development Project of the Year for 2007

Services provided:

- Surveying
- Site planning
- Civil engineering
- Traffic engineering
- Landscape architecture



M I D W E S T E R N C O N S U L T I N G